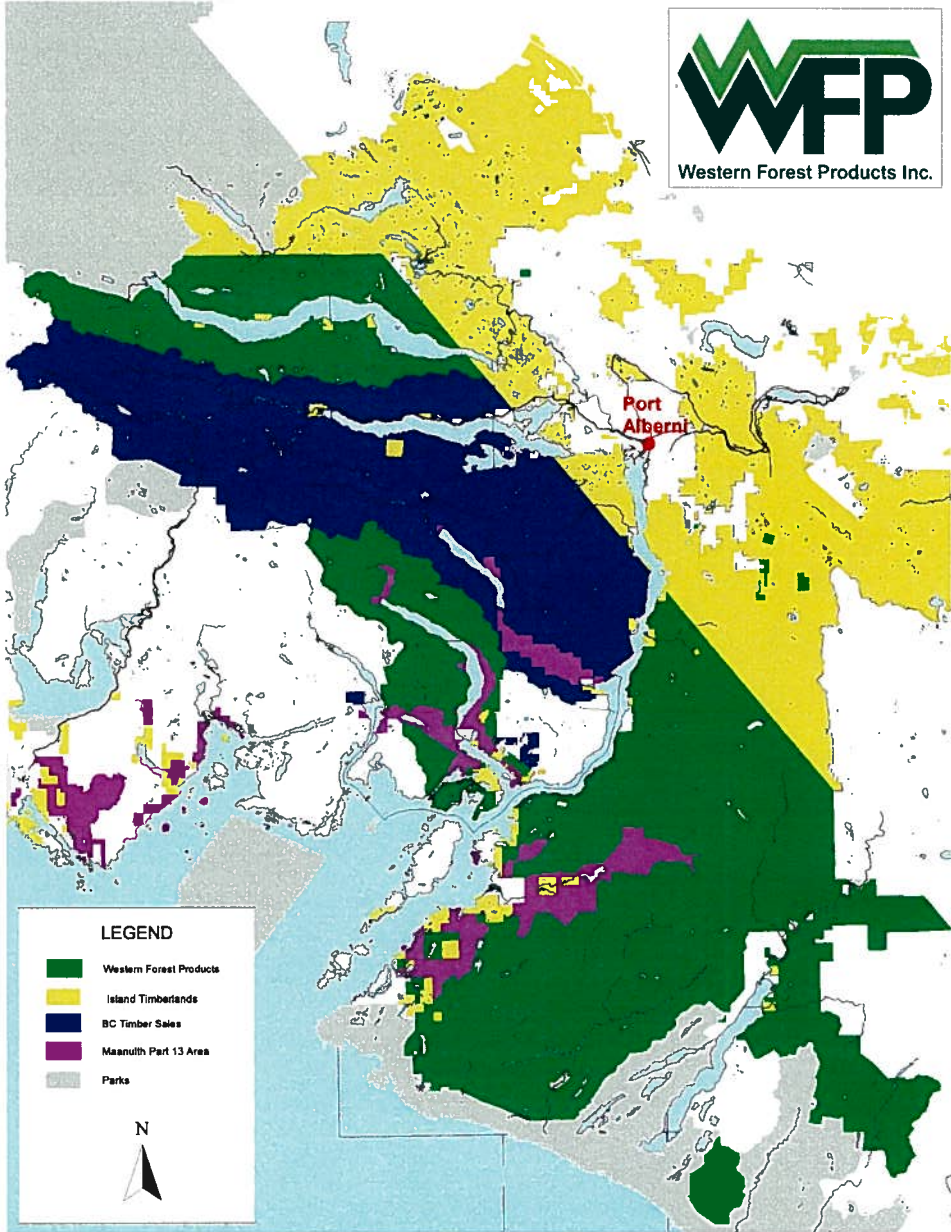


# **DFA (Dec 2006) Compared to DFA (March 2004)**

Reductions for:

- Private Land
- BCTS areas
- Timber Licences
- Maa-Nulth Designated Areas
  
- Reduced by about 50%



**LEGEND**

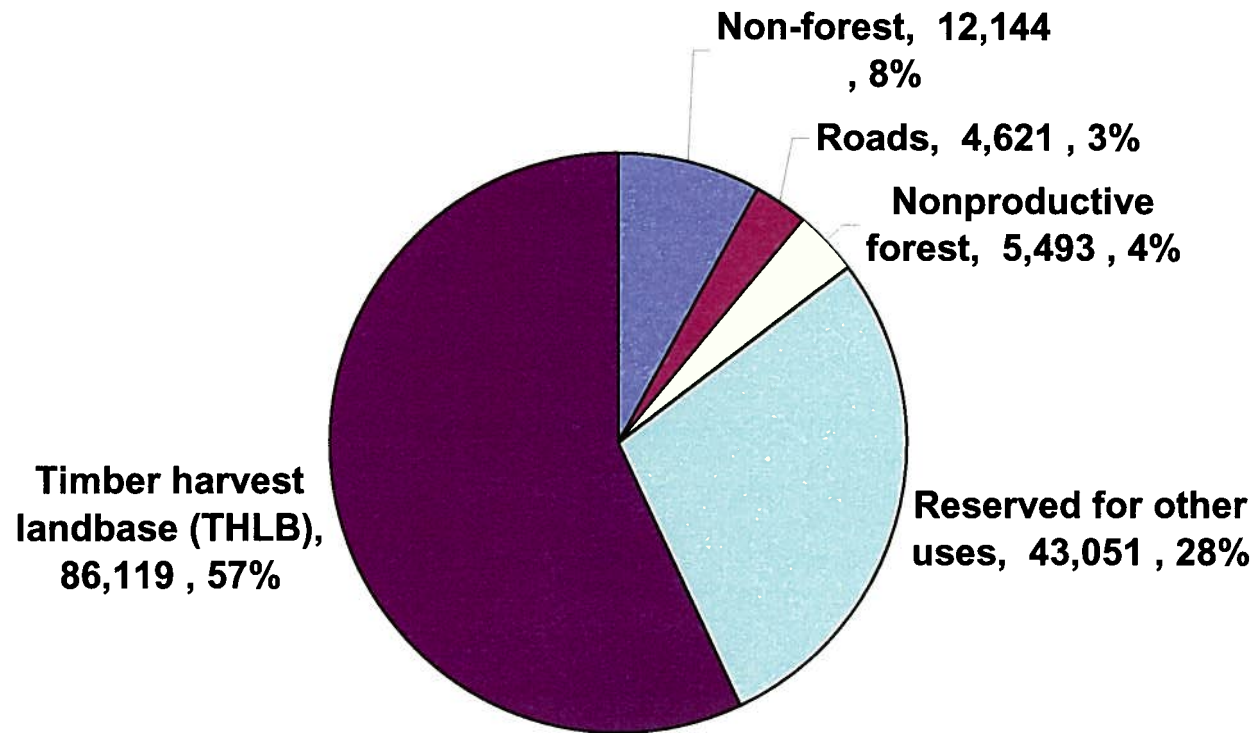
-  Western Forest Products
-  Island Timberlands
-  BC Timber Sales
-  Masonuth Part 13 Area
-  Parks



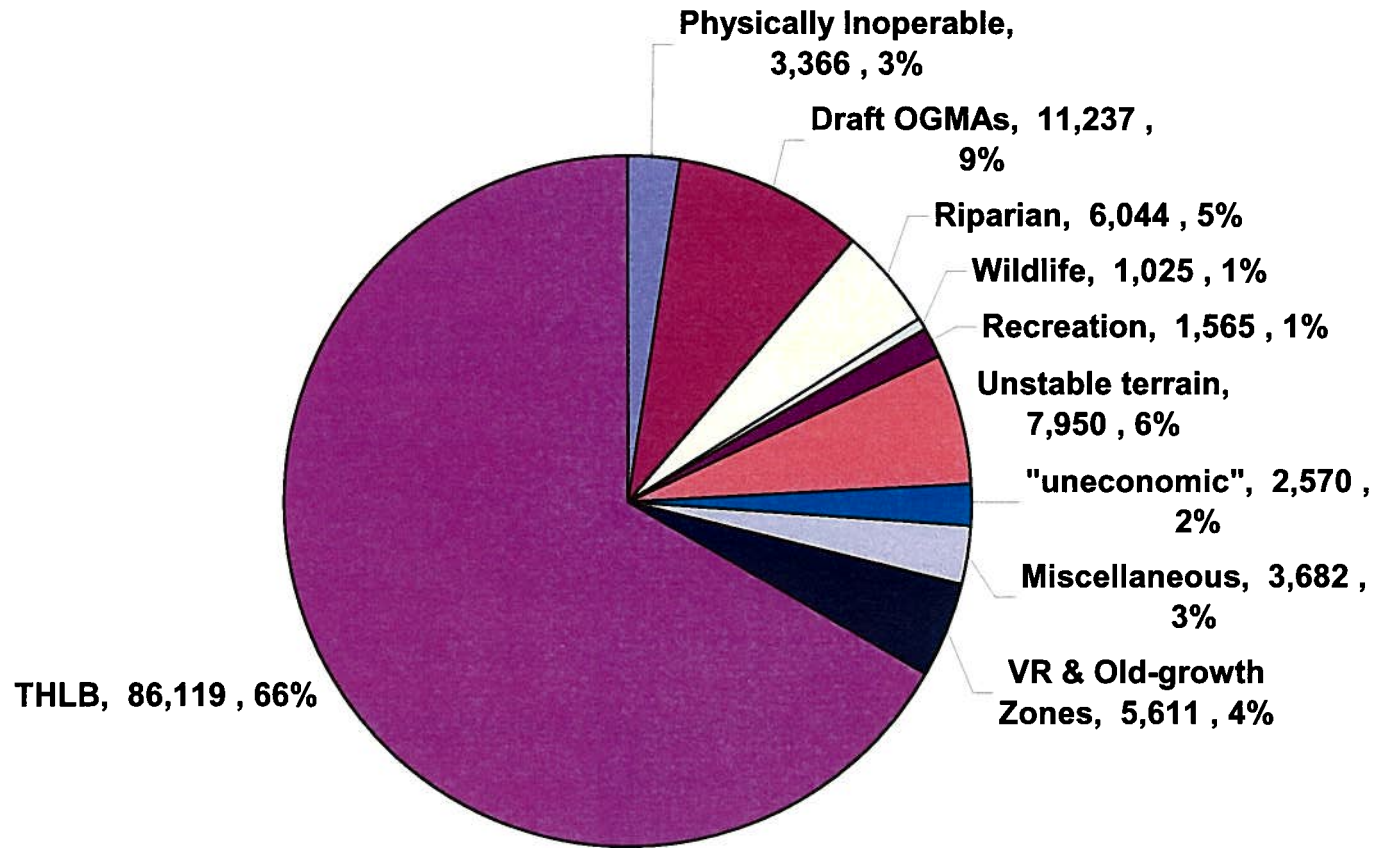
## **DFA (Dec 2006) Compared to TFL 44 within DFA (March 2004)**

	<b>2004</b>	<b>2006</b>
Total Area (ha)	287,683	151,429
Prod. Forest (ha)	249,271	129,170
THLB (ha)	162,174	86,119
AAC (m <sup>3</sup> )	1,675,000	1,011,637
LTHL (m <sup>3</sup> )	1,550,000	851,000

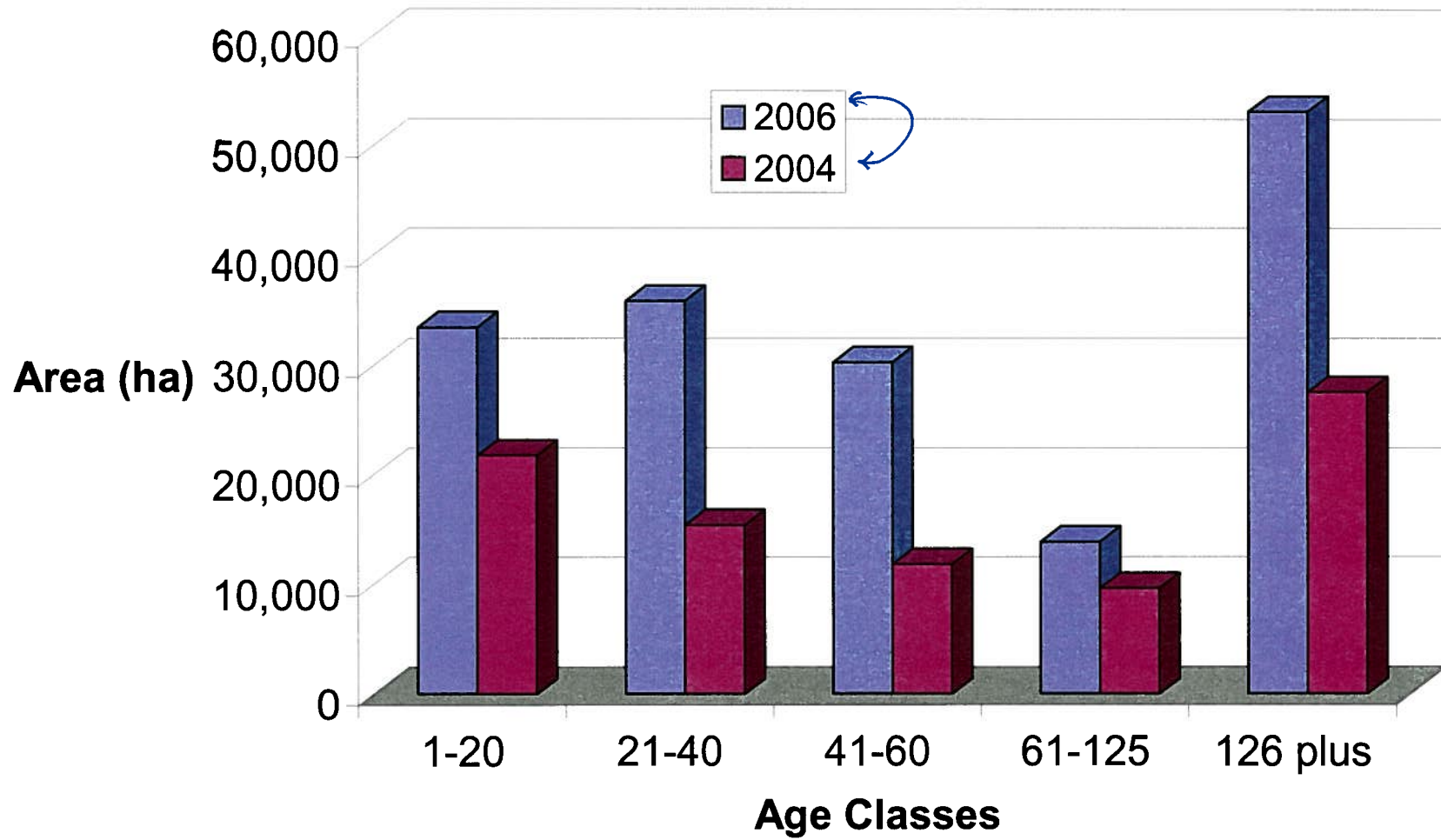
**DFA: 151,429 hectares**



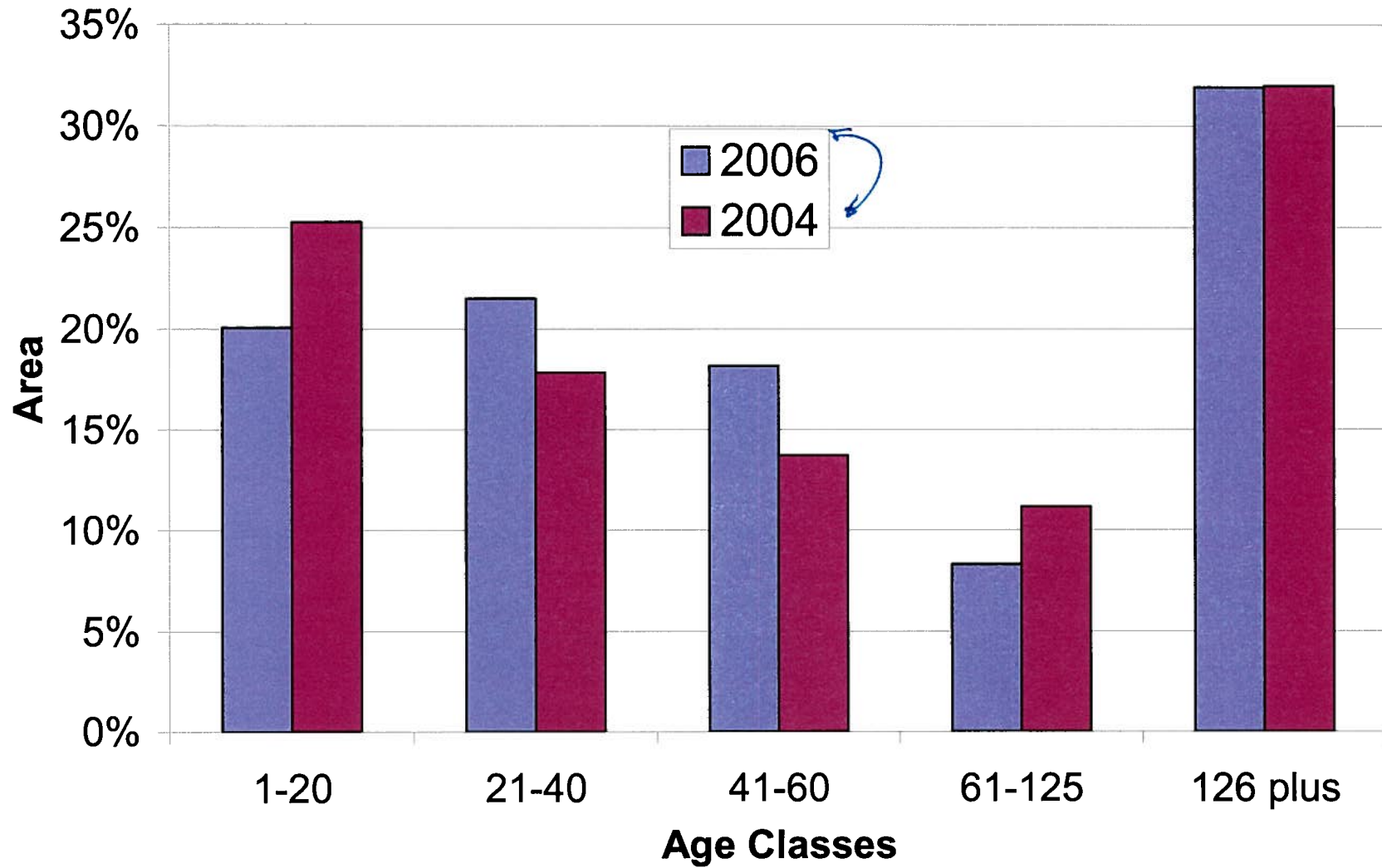
# DFA Productive Forest 129,170 ha



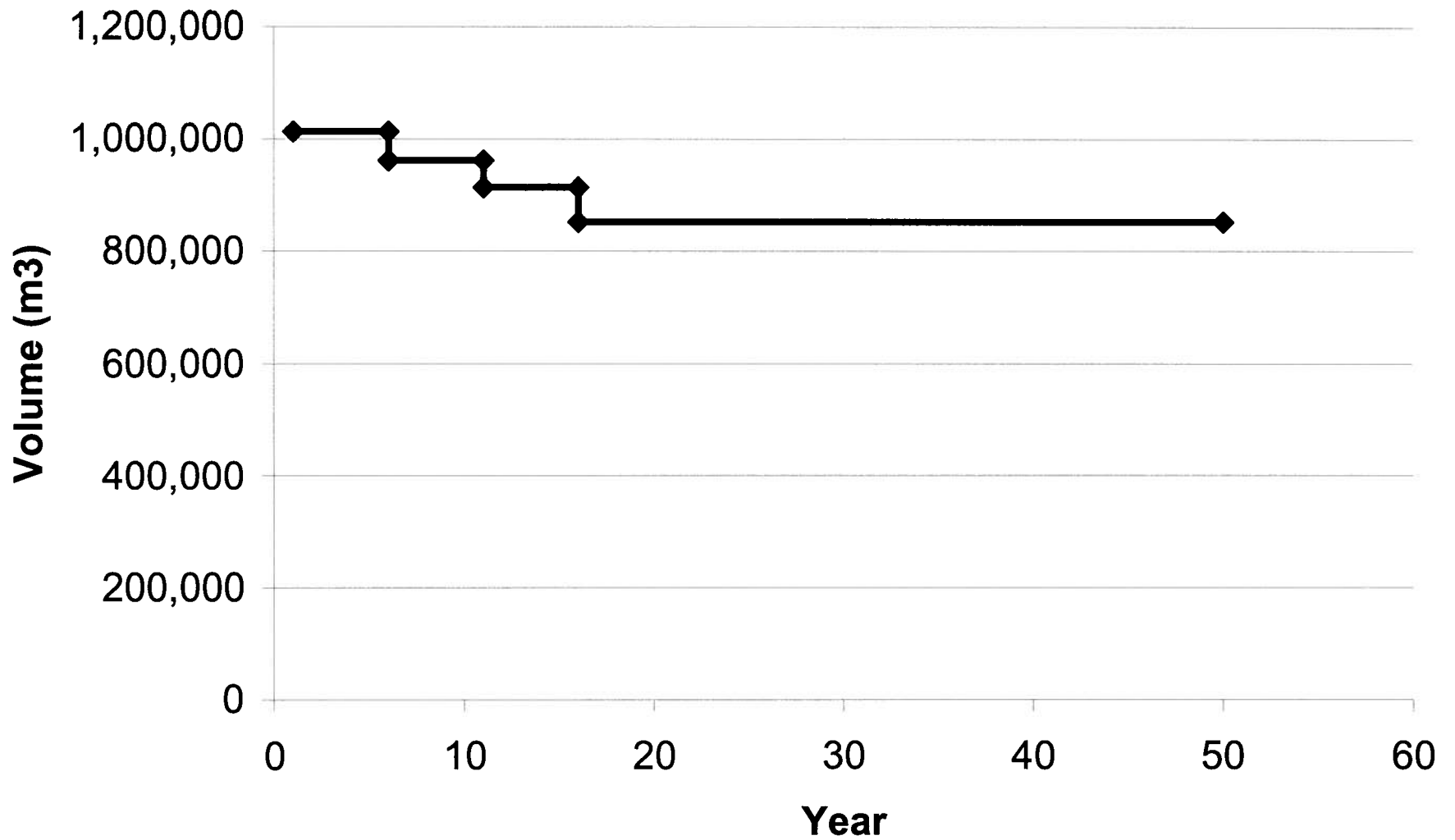
## THLB - Age Classes (ha)



### THLB Age Classes (% area)



## DFA Base Harvest Schedule (Dec 2006)





## **Base Option – Landscape Unit / BEC Variant Targets (Indicator 1)**

**Those that do not meet the targets:**

Caycuse CWHmm1 – small area in LU

Caycuse CWHxm2 – small area in LU

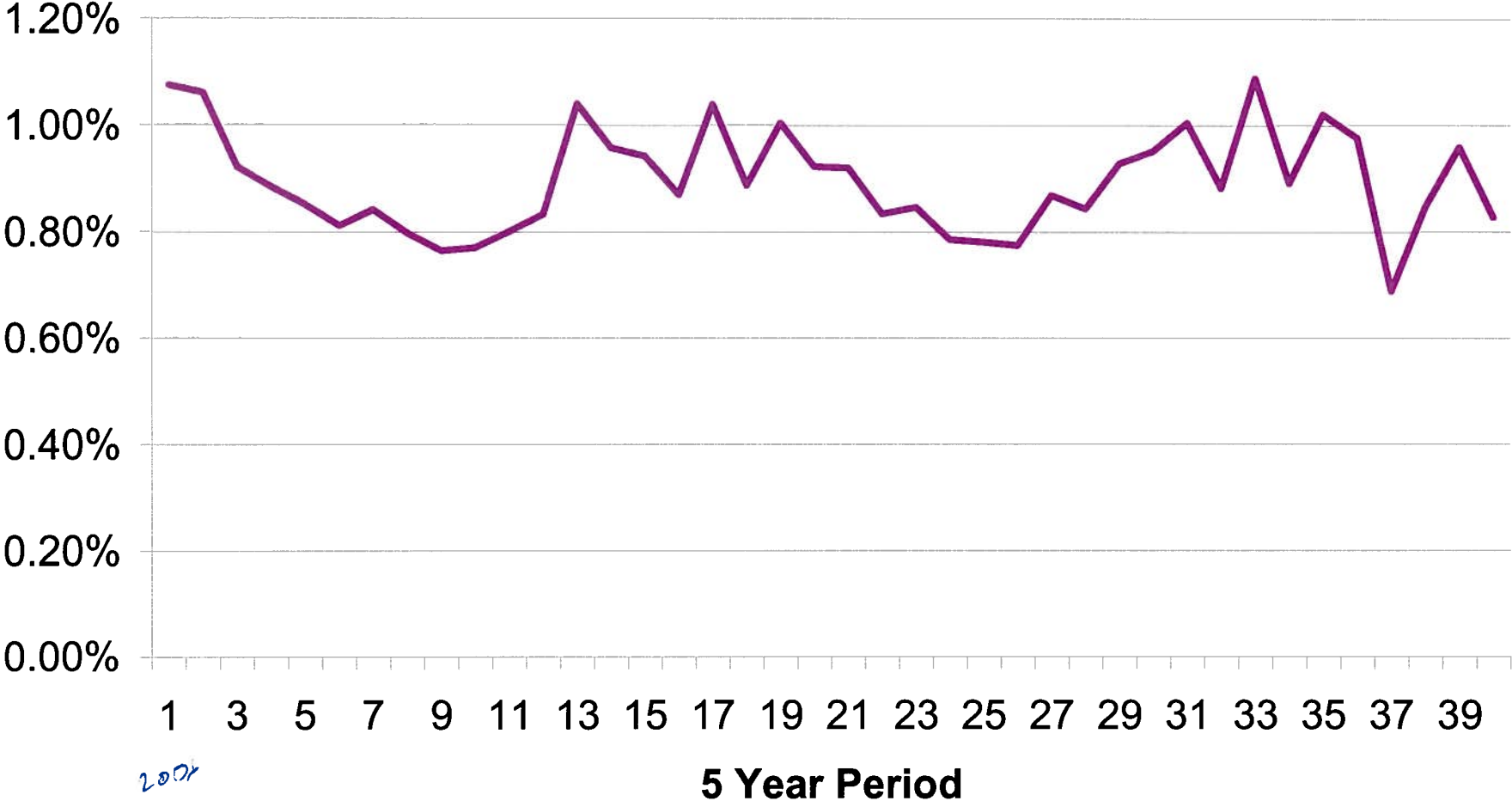
Corrigan CWHvm1 – VILUP, some OGMAs  
in <250 age class

Nitinat CWHmm1 – small area

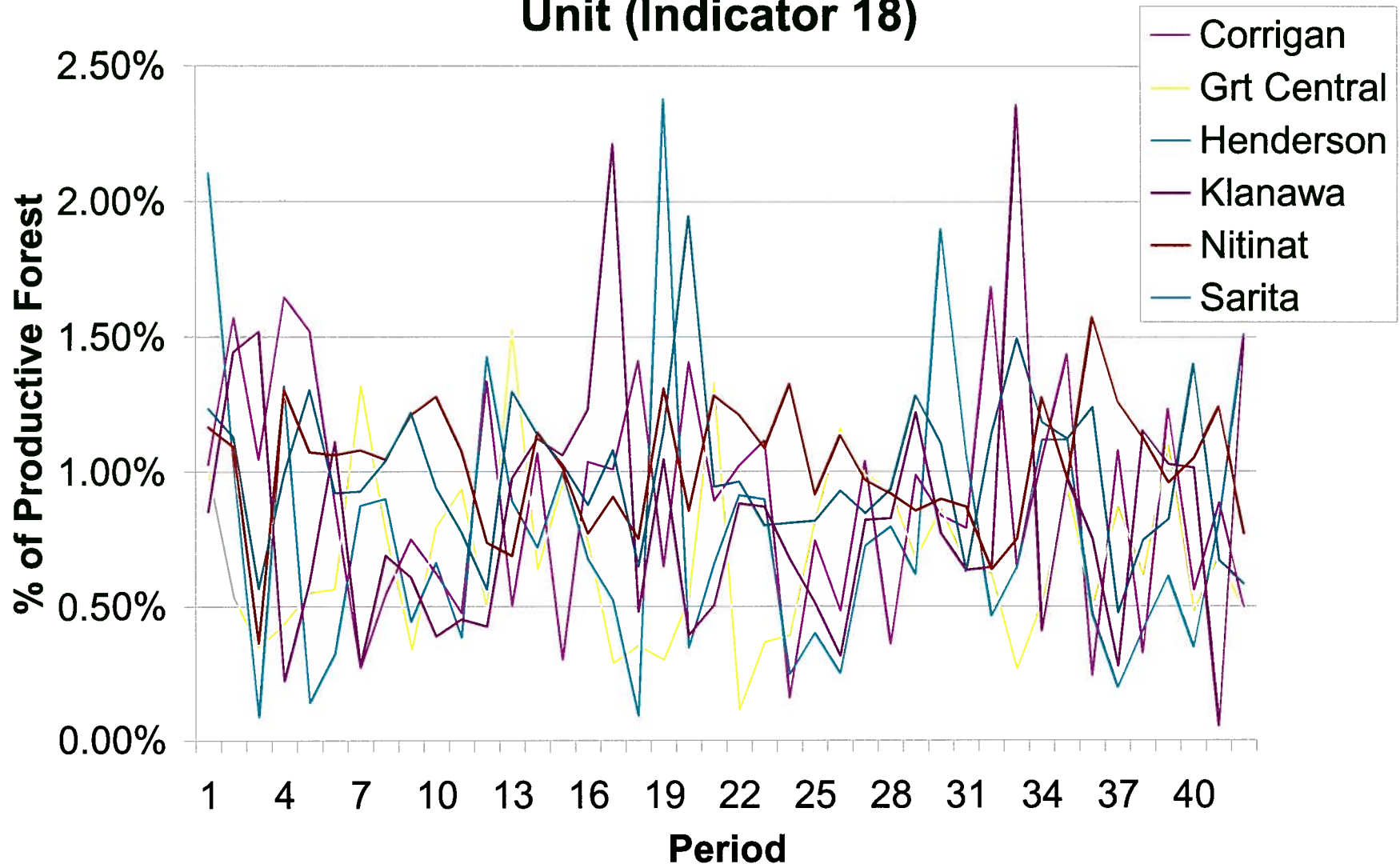
Nitinat CWHvm1 – Pacific Rim Park

Sarita CWHvh1 – Low BEO, Park

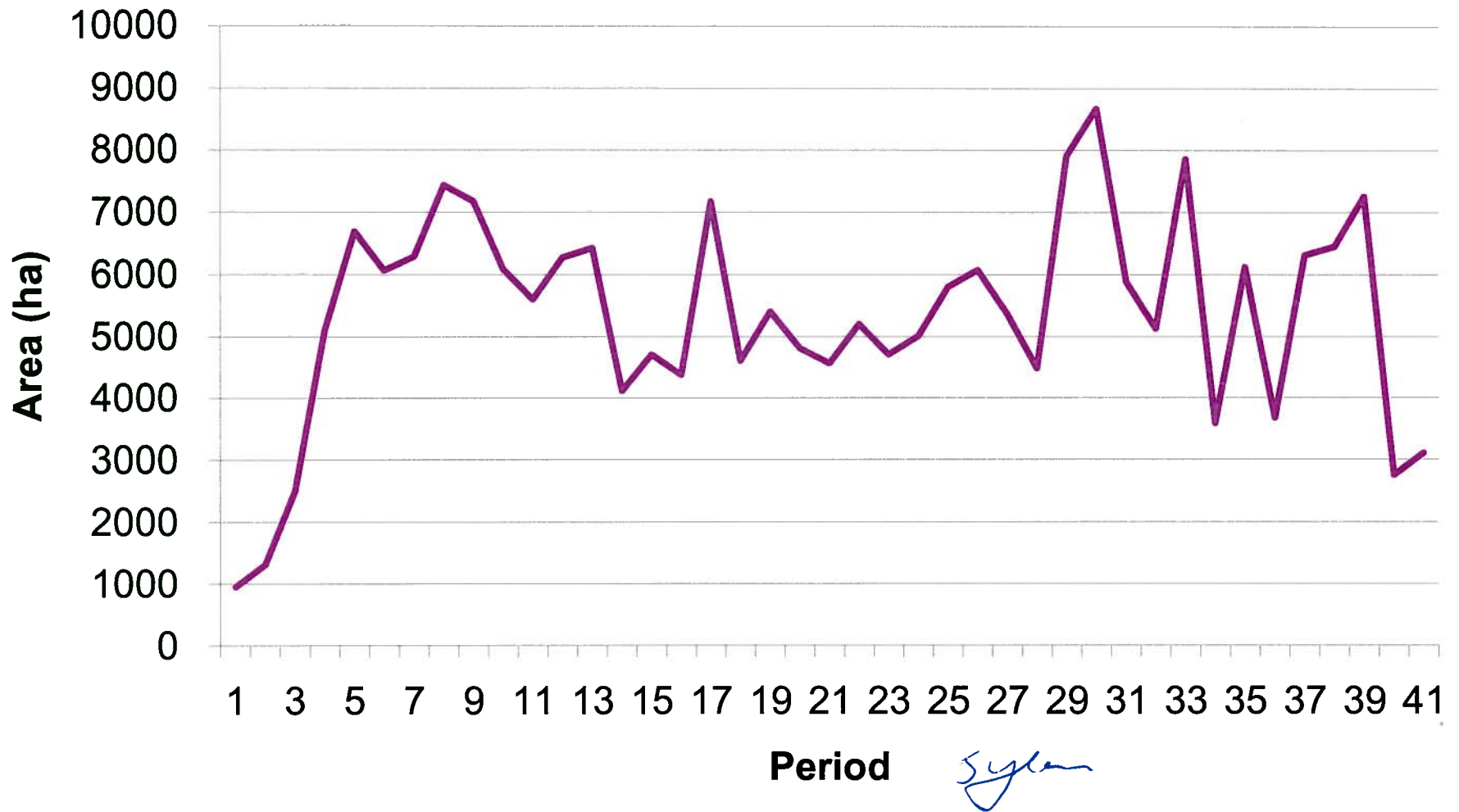
# Base Option - Harvest (%of prod. Forest) (Indicator 17)



# Base Option - Harvest Area by Major Landscape Unit (Indicator 18)



### THLB in Age classes 80-160 (ha) (Indicator 33)



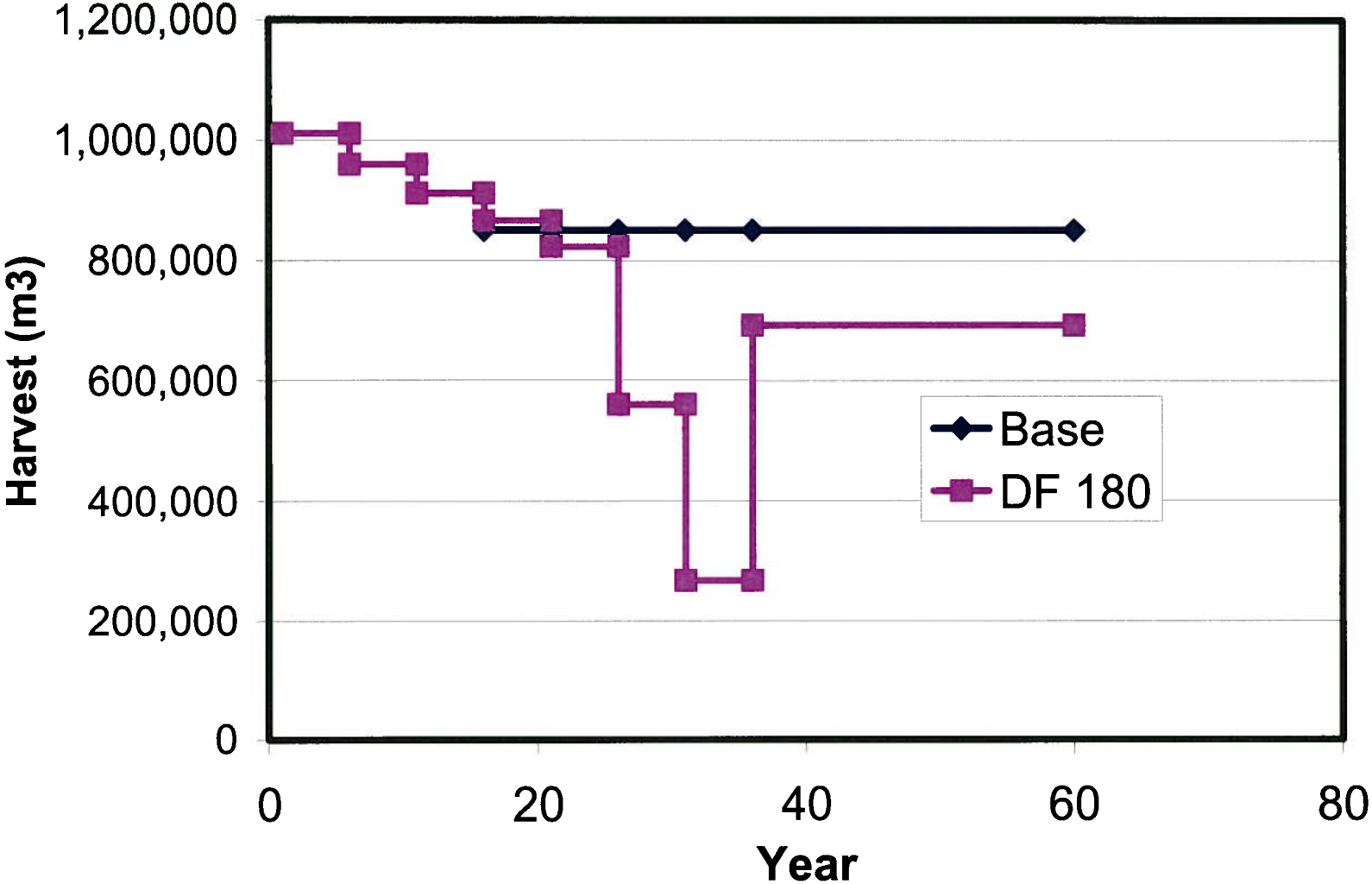
## D. Fir Longer Rotation Scenarios

D.Fir stand types 23% of the THLB

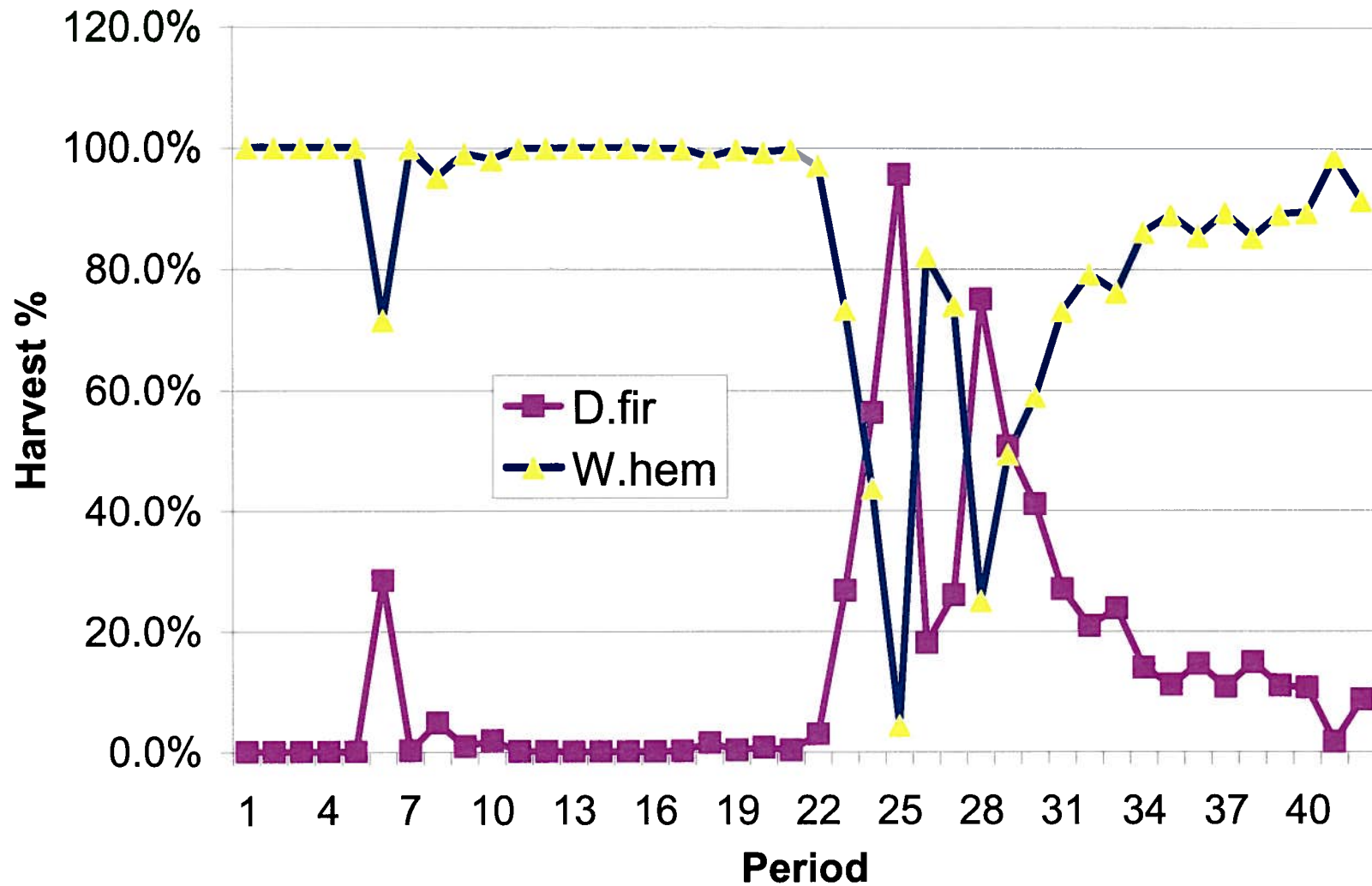
Minimum harvest age of 90 years – D.fir

- Little impact on volume in harvest schedule
- LTHL reduced by 1% from 851,000 to 840,000
- Harvest ages little younger in hemlock, older in D.fir
- Less flexibility on species mix in short-term

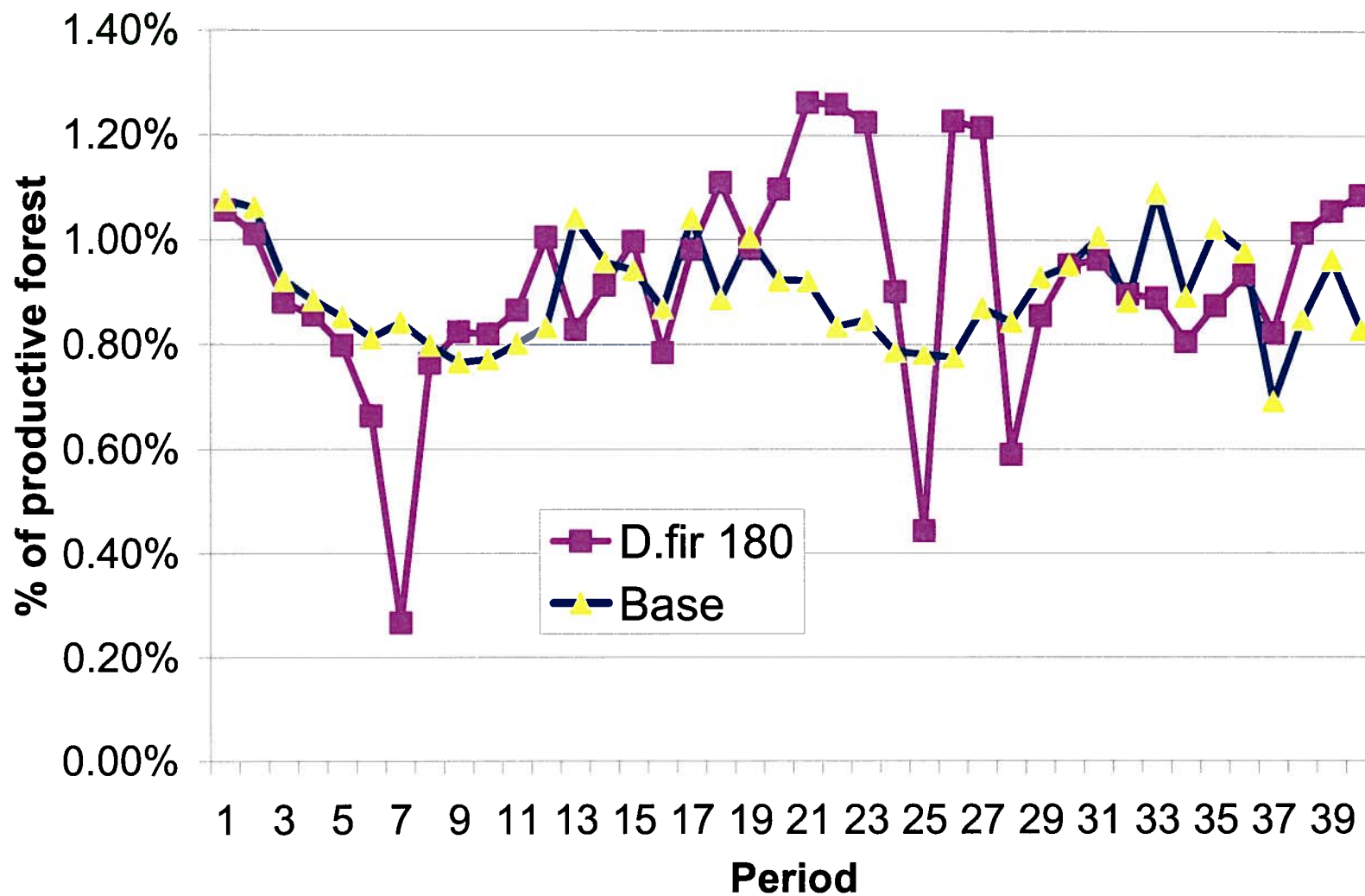
# Harvest Schedules



## Dfir 180 % Harvest by Species Type

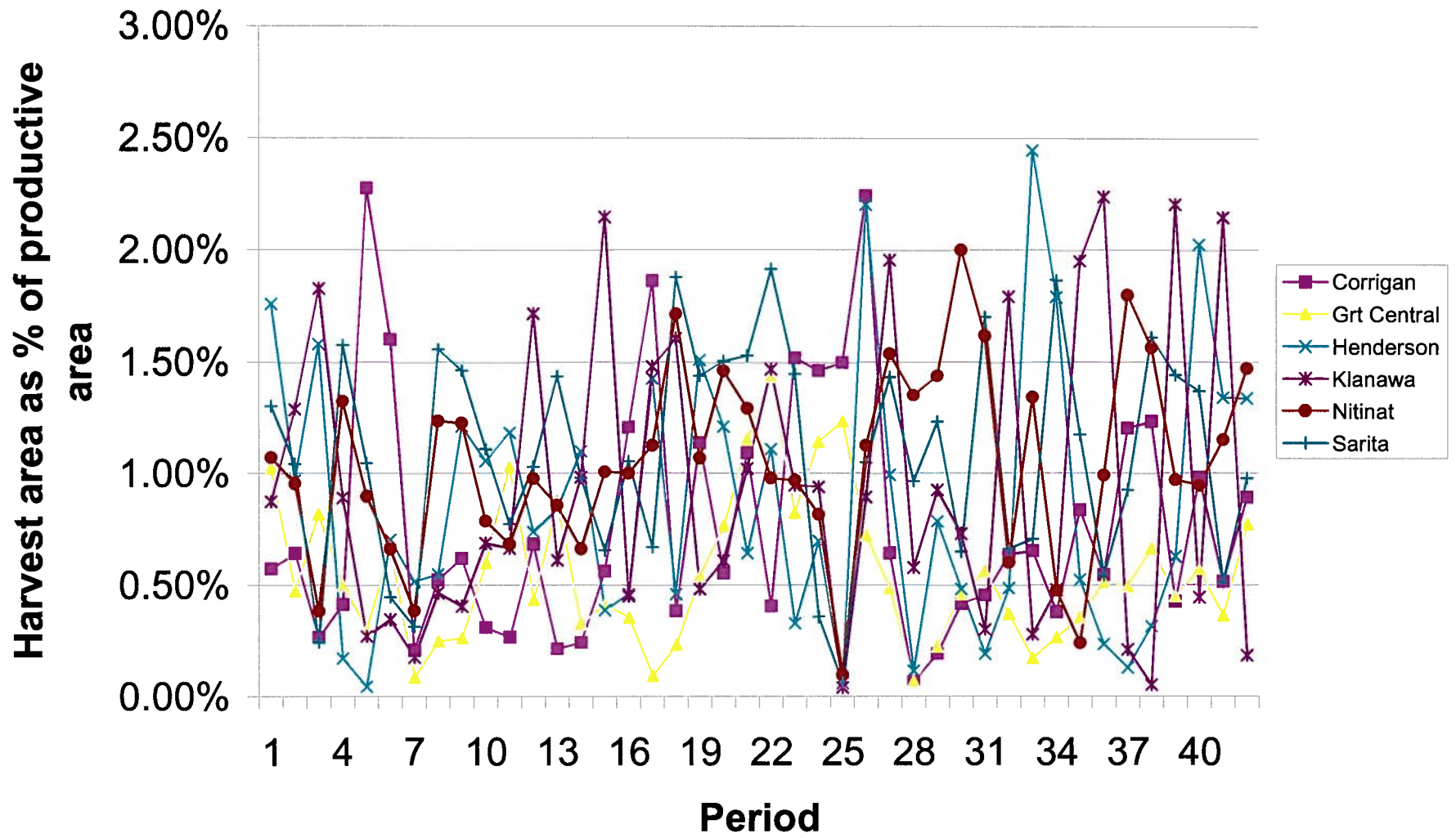


## Harvest Area as % of productive forest

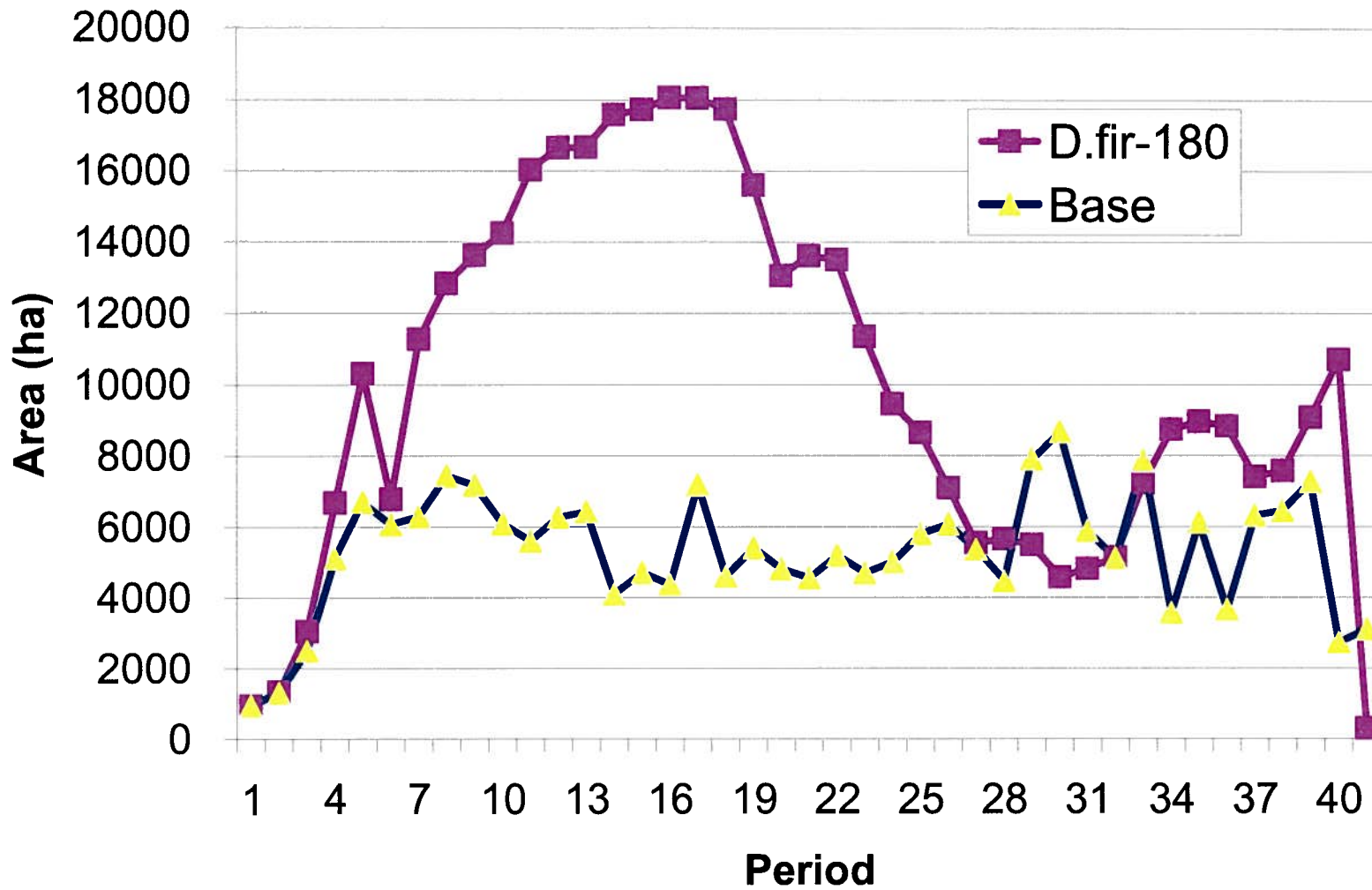




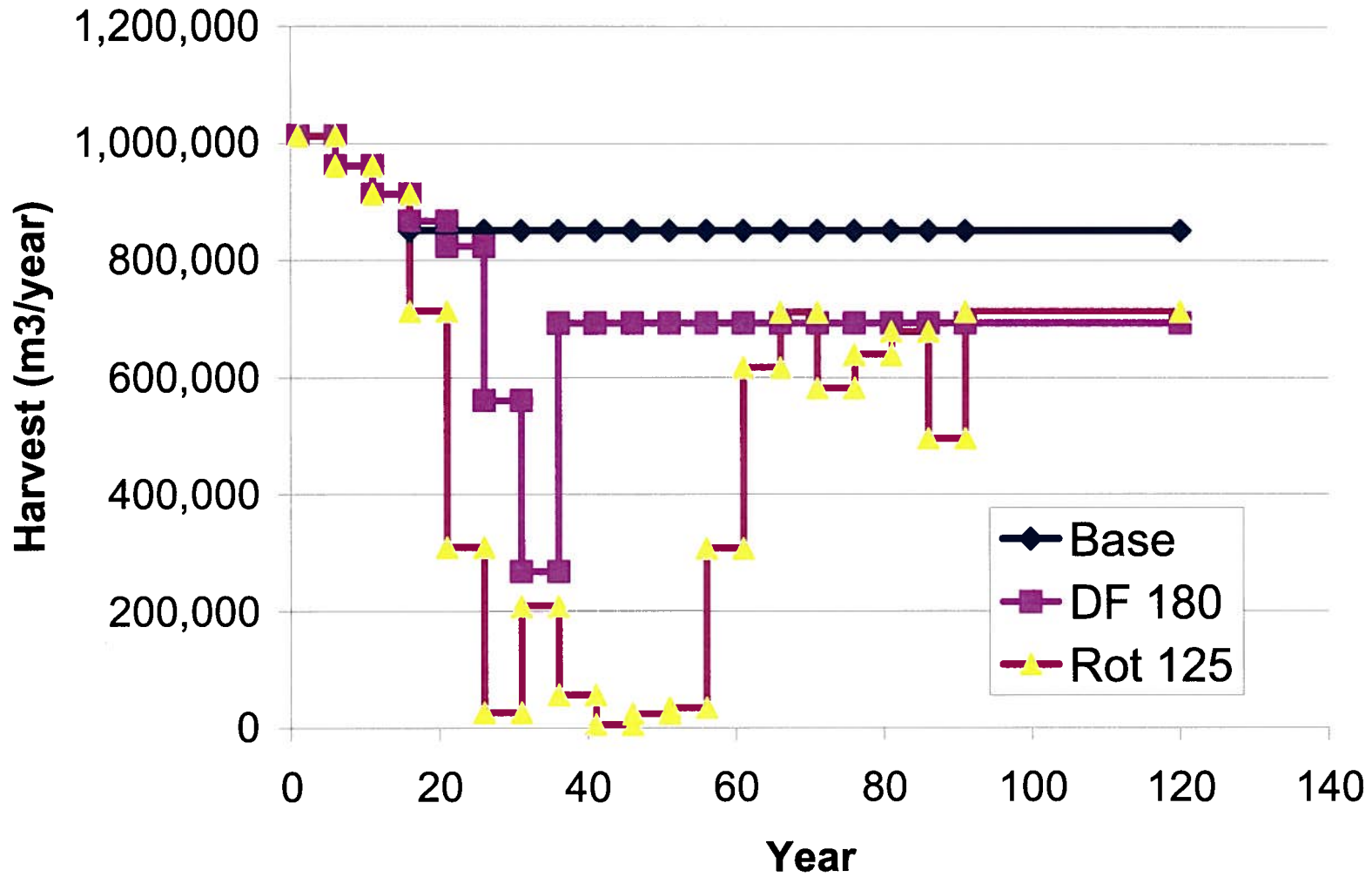
# D.fir 180



## THLB in the 81-160 year Age Class



# Draft Harvest Projections



## Harvest area as % of Productive Forest

