

**Legend**

- Special/Enhanced Management Zone
- Landscape Unit
- Fish Sensitive Watershed
- Community Watershed
- Roads Under Permit
- Recreation Trails
- Harvesting Prohibited Areas
- Active Cutting Permits
- FRPA 196 Block
- Ungulate Winter Range
- Wildlife Habitat Area
- Scenic Areas
- Declared Areas
- Waterbodies
- Streams
- Old Growth Management Area
- Forest Development Unit 1
- Forest Development Unit 2
- Parks

Operational Forester:

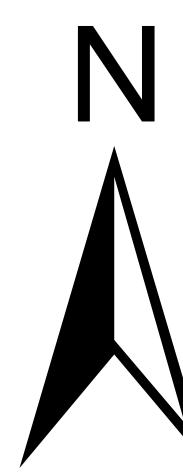
**Disclaimer**

Although we take great care in the preparation of this information and are confident that it is accurate, we do not give any warranty as to its accuracy or suitability for any purpose that it might be used for. Users assume the risk associated with the accuracy and results of the contents of this document.

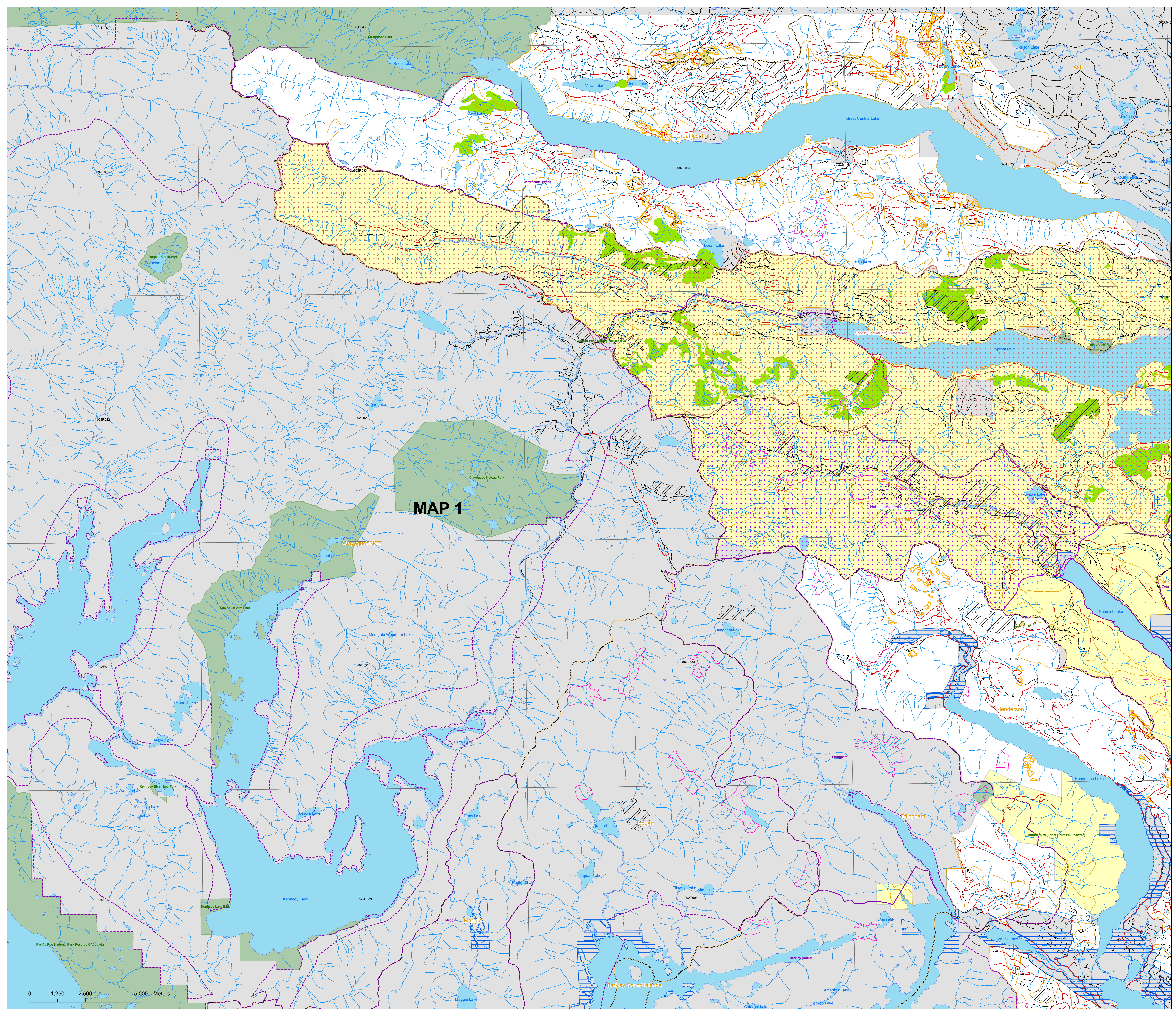
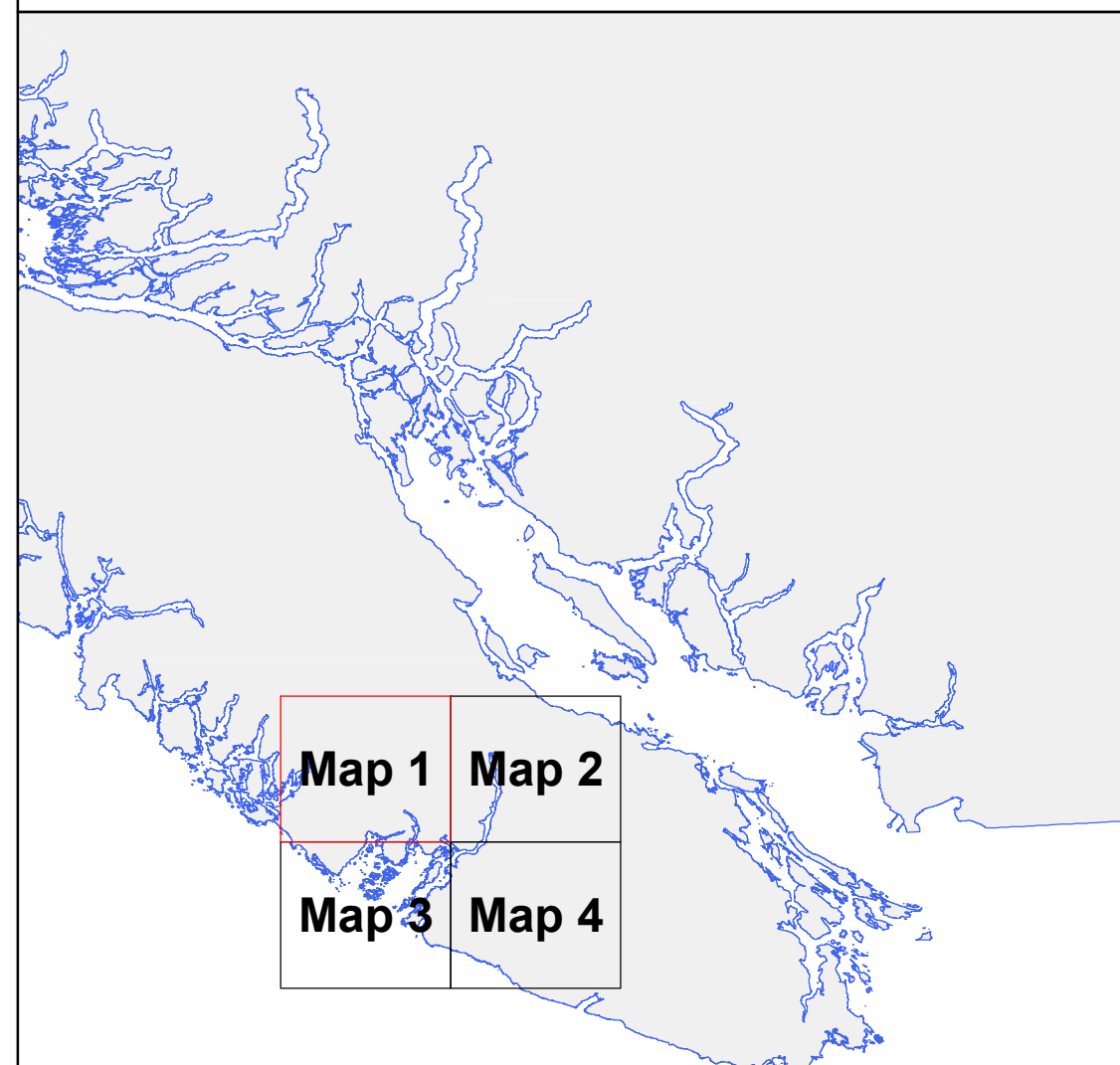
**Map Notes**

Map contents are for illustration purposes only and are representative of data captured from varying sources using differing scale and accuracy. Exact locations of specific map features or in relation to adjacent or corresponding features should be determined on the ground.

In many instances, only information pertinent to the FSP and more specifically to the Forest Development Unit has been displayed on the map. Information that does not intersect the Forest Development Unit such as road permits outside the Forest Development Unit, etc., may be not shown.



Scale 1:50,000  
Albers NAD83  
Date: September 09, 2016



0 1,250 2,500 5,000 Meters